

This monthly update is intended to let you know what happens at a strategic level so that you are aware of things that may affect you in the future, or things that you may want to find out more about. If you have any concerns or suggestions that you wish to be fed into this process and discussed at a strategic level, then contact Sally Perks at YOW on 01902 771163.



Special points of interest:

- Newly Appointed Councillors
- Play
- My Place
- Local Area Agreement

May 2008

Welcoming the Newly Appointed Councillors

Local elections were held on 1 May 2008 to elect councillors for 20 seats on Wolverhampton City Council.

The political share of seats is now as follows:

- Labour: 28 seats (-8 seats)
- Conservative: 27 seats (+8 seats)
- Liberal Democrat: 5 seats (+1 seat)
- Independent: 0 seat (-1 seat)

The new Cabinet Member for Children and Young people is Councillor David Bourne, and the Cabinet Member for Schools is Councillor Gillian Fellows.

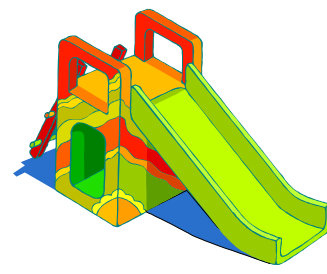
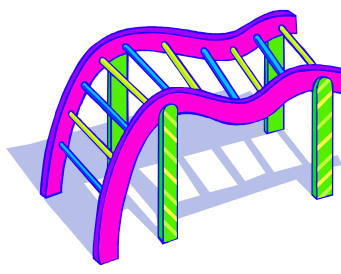
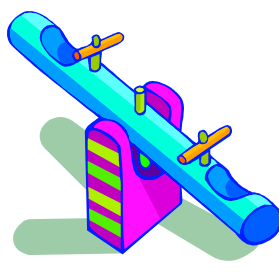
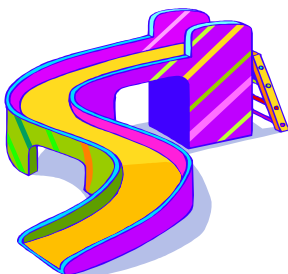
Play

In early November 2007 Wolverhampton City Council submitted a bid to the Big Lottery Fund's Children's Play Programme. The bid was for a total of £693,407, and the City Council received confirmation in early December that the bid had been successful.

The funding will now be used to support 6 projects for 3 years, 4 of these projects are capital projects to develop or refurbish play areas across the city and 2 are revenue projects to support access to quality play opportunities for children with disabilities. Existing facilities are being refurbished in Low Hill and Ashmore Park, and new facilities are being developed in Dovecotes, and Springvale Park in Ettingshall, the consultation for these projects is now underway.

More Good News for Play! On 25th February 2008 Wolverhampton City Council was invited to submit a bid to become one of the 15 Pathfinders across England. Pathfinder status would bring approximately £2.1m of capital and £500'000 revenue funding for 2008-2011 to Wolverhampton and would be used to develop a new, staffed adventure playground and 25-27 new or refurbished play areas.

All submissions had to be in by 7th March and on 2nd April 2008 it was confirmed that Wolverhampton City Council had been successful. Key to this success, was that Wolverhampton demonstrated its commitment to community engagement in capturing the views and input of children, parents and the wider community.



My Place

The Department for Children Schools and Families is managing a new Big Lottery funding stream for the development of youth facilities called 'My Place'. The purpose of the My Space funding stream is;

'to deliver world class youth facilities driven by the active participation of young people and their views and needs.'

All bids have to demonstrate genuine partnership working across sectors, and must be sustainable in the long term. The application process is competitive and bids are expected to be ambitious projects between £1million and £5million which will deliver world class facilities. Young people will be actively involved at all levels of the development of the projects from design through to running the project.



Bids to the My Space funding stream must be submitted by the 30th September and will be assessed between October 2008 and February 2009. Wolverhampton would like to make a co-ordinated bid, and one proposal would be to support the Youth Café development. The Children and Young Peoples Strategic Partnership has agreed to form a working group to take this work forward.

Local Area Agreement Delivery Planning

Local Area Agreements (LAAs) are designed as key ways of channelling funding to councils and bringing together local partners, to achieve better outcomes that are agreed with the Government.

The aim of the LAA is to achieve local solutions that meet local needs, while also contributing to national priorities and the achievement of standards set by central Government. The LAA is being developed within the context of the Governments commitment to reducing the number of performance indicators (targets) placed on localities, and the LAA is intended to be the only place where negotiations take place between local and central Government.

The 35 local targets have almost been agreed, and they are now being attributed to four delivery plans, these fall in line with the delivery planning framework for all theme partnerships, and are;

- Neighbourhoods that Work
- Reducing Worklessness
- Children and Young People
- Supporting Inclusion

For more information contact Sally at YOW on 01902 771163.